

**PARAPET GUTTER**

EK3020 - LOW EAVE PARAPET GUTTER

EK3040 - LOW EAVE PARAPET GUTTER at MASONRY WALL

## EK3020 - LOW EAVE PARAPET GUTTER

[Download the DWG file by clicking here.](#)

### PARAPET GUTTER INSTALLATION

#### ERECTOR NOTE

VALLEY AND PARAPET GUTTERS ARE DESIGNED TO FUNCTION AS FREE-FLOWING GUTTER SYSTEMS. THEY MUST BE DESIGNED WITH ADEQUATE DRAINAGE AND KEPT FREE OF DEBRIS AND OTHER MATERIALS THAT MAY RESTRICT WATER FLOW. IT IS RECOMMENDED TO USE HEAT TAPE TO REDUCE THE LIKELIHOOD OF ICE AND SNOW BUILD UP IN THE GUTTER.

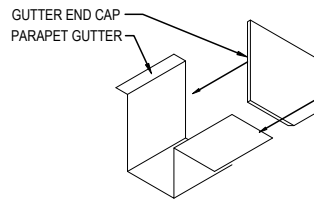
RUBBER LINER FOR PARAPET GUTTERS IS NOT SUPPLIED BY MBS. INSTALL BEFORE THE ROOF PANELS AND BACKER PANELS ARE INSTALLED.

#### PARAPET GUTTER SPLICE AND ENDCAP PREPARATION

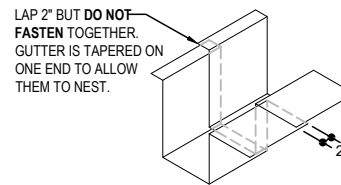
FIELD WELD THE PARAPET GUTTER END CAP TO THE PARAPET GUTTER. USING **GPC L** OR **R** PAY CLOSE ATTENTION TO THE DETAIL AND THE ORIENTATION OF THE PARAPET END CAP. THE TABS ON THE CAP SHOULD BE AT THE BOTTOM AND BACK OF GUTTER AS SHOWN BELOW

LEFT AND RIGHT PARAPET END CAP PART NUMBERS

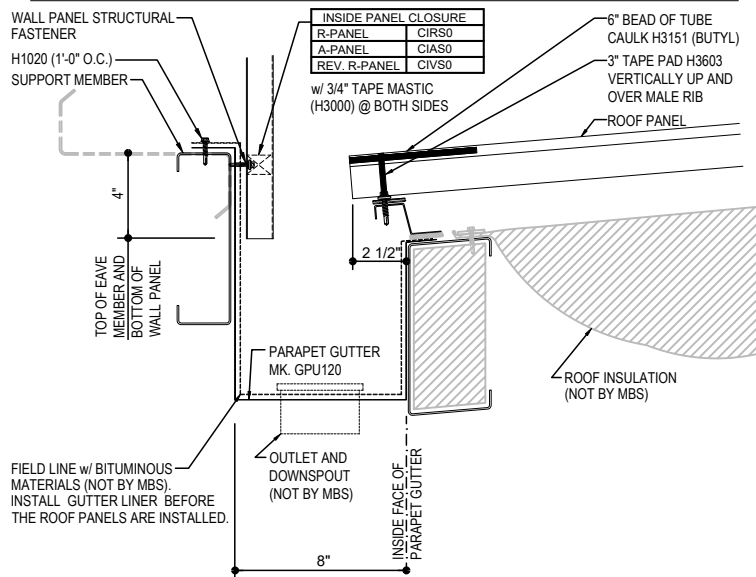
- USE **GPC L** - LEFT AT THE FAR END OF THE GUTTER
- USE **GPC R** - RIGHT AT THE NEAR END OF THE GUTTER



PARAPET GUTTER END CAP



PARAPET GUTTER SPLICE



### PARAPET GUTTER DETAIL

LOW EAVE DETAIL w/ PARAPET GUTTER  
SEE WALL SHEETING ERECTION NOTES FOR WALL PANEL FASTENER LOCATIONS

**EK3020**

#### Detailer Notes:

- 1) N/A

## EK3040 - LOW EAVE PARAPET GUTTER at MASONRY WALL

[Download the DWG file by clicking here.](#)

### PARAPET GUTTER INSTALLATION

#### ERECTOR NOTE

VALLEY AND PARAPET GUTTERS ARE DESIGNED TO FUNCTION AS FREE-FLOWING GUTTER SYSTEMS. THEY MUST BE DESIGNED WITH ADEQUATE DRAINAGE AND KEPT FREE OF DEBRIS AND OTHER MATERIALS THAT MAY RESTRICT WATER FLOW. IT IS RECOMMENDED TO USE HEAT TAPE TO REDUCE THE LIKELIHOOD OF ICE AND SNOW BUILD UP IN THE GUTTER.

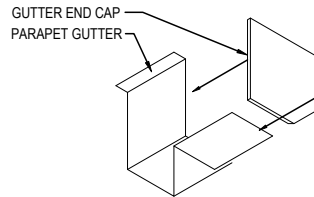
RUBBER LINER FOR PARAPET GUTTERS IS NOT SUPPLIED BY MBS. INSTALL BEFORE THE ROOF PANELS AND BACKER PANELS ARE INSTALLED.

#### PARAPET GUTTER SPLICE AND ENDCAP PREPARATION

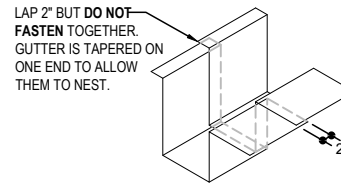
FIELD WELD THE PARAPET GUTTER END CAP TO THE PARAPET GUTTER. USING **GPC L** OR **R** PAY CLOSE ATTENTION TO THE DETAIL AND THE ORIENTATION OF THE PARAPET END CAP. THE TABS ON THE CAP SHOULD BE AT THE BOTTOM AND BACK OF GUTTER AS SHOWN BELOW

LEFT AND RIGHT PARAPET END CAP PART NUMBERS

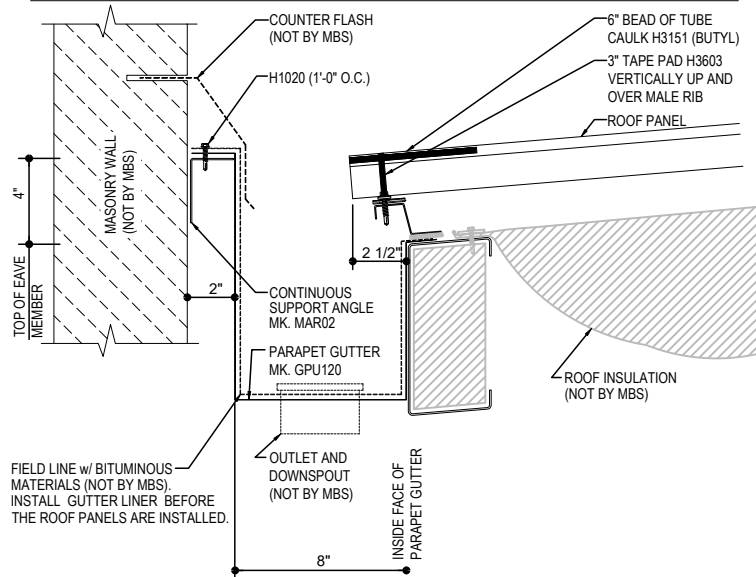
- USE **GPC L** - LEFT AT THE FAR END OF THE GUTTER
- USE **GPC R** - RIGHT AT THE NEAR END OF THE GUTTER



PARAPET GUTTER END CAP



PARAPET GUTTER SPLICE



### PARAPET GUTTER DETAIL

LOW EAVE DETAIL w/ PARAPET GUTTER at MASONRY WALL

**EK3040**

#### Detailer Notes:

- 1) N/A